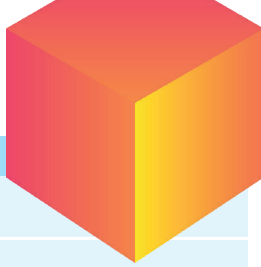


18.06. / AGENDA



08.00 – 09.00	MEET & GREET
09.00 – 09.20	Welcome by MF SOFTWARE and AUTODESK
09.20 – 10.00	EU regulation of the plastics sector DR. ALEXANDER KRONIMUS / PLASTICS EUROPE (DE)
10.00 – 10.30	Handling batch variations in post-consumer recycled PC/ABS DR. JULIAN HEINISCH / LG CHEM EUROPE GMBH (DE)
10.30 – 11.00	Uncertainty propagation in injection molding simulation – tackling the variability of recycled materials in virtual design DR. CAMILO CRUZ / ROBERT BOSCH GMBH (DE)
11.00 – 11.30	COFFEE BREAK / EXHIBITION
11.30 – 12.00	Intelligent parameter optimization in injection molding through human-machine cooperation in simulation and reality YANNIK LOCKNER / OSPHIM GMBH (DE)
12.00 – 12.30	MOLDFLOW 2024: review and a look ahead HANNO VAN RAALTE / AUTODESK INC. (USA)
12.30 – 13.45	LUNCH BREAK / EXHIBITION
13.45 – 14.15	twino: Extended productivity toolkit for ramp-up AKASH CASTELINO / INPRO (DE)
14.15 – 14.45	Extending the simulation capabilities of MOLDFLOW with Synergy API and Python using the example of film back injection molding PROF. THOMAS LUCYSHYN / MONTANUNIVERSITÄT LEOBEN (A)
14.45 – 15.15	LFT tape underbodies for electromobility: thermal simulation using SimuTerm as the basis for a robust compression molding simulation DR. MARTIN HOHBERG / SIMUTENCE GMBH (DE)
15.15 – 15.45	COFFEE BREAK / EXHIBITION
15.45 – 16.15	Connected engineering of plastic parts with Synera HENDRIK SCHÜTTE / CODE PRODUCT SOLUTIONS (NL) ANDREW SARTORELLI / SYNERA GMBH (DE)
16.15 – 16.45	Prediction of core strength and durability based on real case BINIAM GEBREYOHANNES & SIMON HADBA / FORTEQ GROUP (CH)
16.45 – 17.15	Overall consideration of tool rigidity and fatigue strength TILMAN GRÖSSER / PLASTICS ENGINEERING GROUP GMBH (DE)

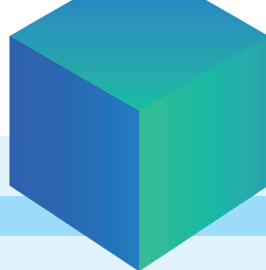
EUROPEAN MOLDFLOW® USER MEETING 2024

18.06. / WORKSHOPS

08.00 – 09.00	MEET & GREET
10.30 – 11.10	Auswirkung der Angusstechnik auf die Schmelzetemperatur (German) KLAUS-PETER BÄNSCH / VEREIDIGTER SACHVERSTÄNDIGER FÜR WERKZEUG- UND FORMENBAU
11.00 – 11.30	COFFEE BREAK / EXHIBITION
11.30 – 12.00	Upgrade parts' crashworthiness by exploiting injection molding manufacturing effects BETA CAE SYSTEMS SA
12.30 – 13.45	LUNCH BREAK / EXHIBITION
13.45 – 14.15	Trainings in the MOLDFLOW ACADEMY – a brief insight into the special processes such as Gas Injection, MuCell and ICM MF SOFTWARE GMBH
14.15 – 14.45	Hands-on with twino INNOVATIONSGESELLSCHAFT FÜR FORTGESCHRITTENE PRODUKTIONSSYSTEME IN DER FAHRZEUGINDUSTRIE MBH
14.45 – 15.15	Initial injection molding process setup by machine learning- Workflows in the OSPHIM WEB platform OSPHIM GMBH
15.15 – 15.45	COFFEE BREAK / EXHIBITION
15.45 – 16.15	MOLDFLOW Pay Per Use – Subscription via Autodesk Flex Token MF SOFTWARE GMBH
16.15 – 16.45	Live Demo of the Synera MOLDFLOW Connector CODE PRODUCT SOLUTIONS & SYNERA GMBH
16.45 – 17.15	Leveraging AI in multiscale simulations for reliable reinforced plastics design HEXAGON



19.06. / AGENDA



06.45 – 07.15	MOLDFLOW® Hot Runners
08.00 – 08.55	MEET & GREET
08.55 – 09.00	Welcome
09.00 – 09.30	Influence of material data quality on shrinkage and warpage results BLAZEJ PALUSZYNSKI / BASF SE (DE)
09.30 – 10.00	Validation tool for injection molding simulation DR. PHILIPP BRUNS / ENVALIOR DEUTSCHLAND GMBH (DE)
10.00 – 10.30	Sensitivity analysis of the rheological model main parameters to evaluate improvements of micro injection molding simulations accuracy DR. GIANLUCA TROTTA / CONSIGLIO NAZIONALE DELLE RICERCHE STIIMA (I)
10.30 – 11.00	COFFEE BREAK / EXHIBITION
11.00 – 11.30	Compensation of part warpage in injection molding using local thermal sprayed ceramic heater layers SEBASTIAN SCHWAN / IKV AACHEN (DE)
11.30 – 12.00	Enhancing injection molding simulation accuracy: a history of investigating MOLDFLOW Rotational Diffusion (MRD) fiber orientation model parameters using a Design of Experiments (DOE) approach THOMAS WILLERER / WEBASTO SE (DE)
12.00 – 12.45	Autodesk MOLDFLOW: Research and development updates DR. FRANCO COSTA / AUTODESK INC. (AUS)
12.45 – 14.00	LUNCH BREAK / EXHIBITION
14.00 – 14.30	Thermoelasticity of injection-molded parts ETHAYAKKANNAN SHANMUGAVEL / HELLA INDIA AUTOMOTIVE PRIVATE LIMITED (IND)
14.30 – 15.00	Warpage prediction put to the test. Comparison of simulations vs. moulded parts using an experimental injection-Molding tool MICHAEL KÄFER / MELECS EWS GMBH (A)
15.00 – 15.30	Automated Gate Location Optimization – Analysis Of A Part Development Process And Experimental Verification FELIPE PORCHER, TU BERLIN / PAUL BORGER, BSH HAUSGERÄTE GMBH (DE)
15.30 – 15.45	Farewell SVEN THEISSEN / MF SOFTWARE GMBH (DE)
15.45	SNACKS

EUROPEAN MOLDFLOW® USER MEETING 2024

19.06. / WORKSHOPS

06.45 – 07.15	MOLDFLOW® Hot Runners
08.00 – 08.55	MEET & GREET
08.55 – 09.00	Welcome
09.00 – 09.30	Auswirkung der Angusstechnik auf die Schmelzetemperatur (German) KLAUS-PETER BÄNSCH / VEREIDIGTER SACHVERSTÄNDIGER FÜR WERKZEUG- UND FORMENBAU
09.30 – 10.00	Initial injection molding process setup by machine learning- Workflows in the OSPHIM WEB platform OSPHIM GMBH
10.00 – 10.30	Trainings in the MOLDFLOW Academy – Fusion Simulation Extension MF SOFTWARE GMBH
10.30 – 11.00	COFFEE BREAK / EXHIBITION
11.00 – 11.30	Hands-on with twino INNOVATIONSGESELLSCHAFT FÜR FORTGESCHRITTENE PRODUKTIONSSYSTEME IN DER FAHRZEUGINDUSTRIE MBH
11.30 – 12.00	Upgrade parts' crashworthiness by exploiting injection molding manufacturing effects BETA CAE SYSTEMS SA
12.45 – 14.00	LUNCH BREAK / EXHIBITION
14.00 – 14.30	Live Demo of the Synera MOLDFLOW Connector CODE PRODUCT SOLUTIONS & SYNERA GMBH
15.45	SNACKS

